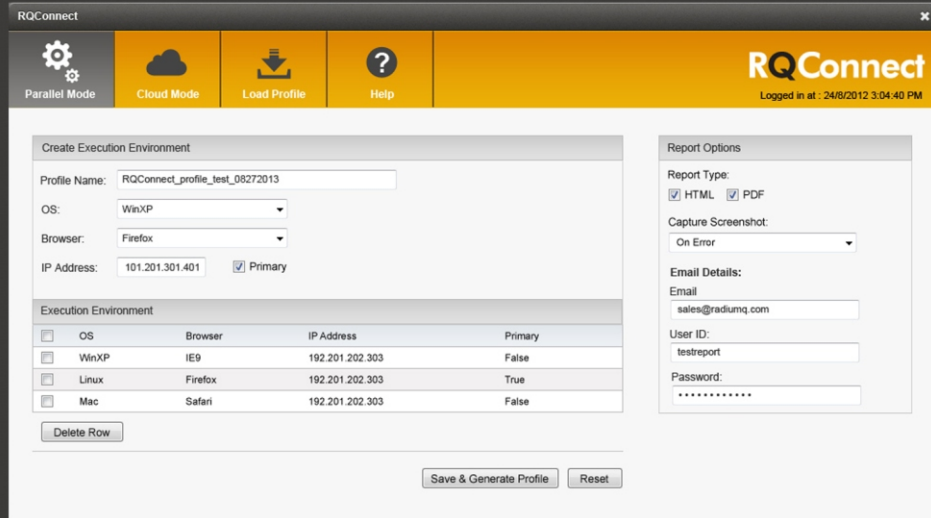


→ Improve Automation ROI with RQConnect by RadiumQ



RadiumQ Overview

We are a team of software engineers and system architects with a shared goal- to offer innovative software products that make testing faster and easier, saving our customers' time and money while delivering a superior return on investment.

What is RQConnect

RQConnect is a plugin for HP's QTP Functional Testing software, which enables QTP to execute test scripts on distinct browser/operating system combinations, either in parallel on a local system/remote system, or from the cloud. The RQConnect plugin is easy to configure through a simple, intuitive User Interface (UI), and offers the advantages of storable/reusable test profiles and multiple reporting options.

RQConnect Benefits

Improve Automation Return-on-Investment: Consistency and efficiency of iterative activities can only be established through careful automation of these activities. With RQConnect, experience decreased automation regression cycle times!

Shortened time-to-market: while our QA team concentrates on core product innovation, your testing team can focus on the quality assurance activities, quickly performing test executions, resulting in faster delivery, increased customer satisfaction, and reduced development costs.

Shorter Turnaround Time: receive the results of tests immediately upon completion or as OS Notifications.

RQConnect offers great flexibility in receiving reports!

Reports are available native QTP files in Local, Cloud, and Parallel modes, with attached screenshots, on either "Error Occurrence" or Every Step" of the test script. Or, you can choose to have reports delivered as HTML or PDF files, with support to have reports auto-emailed to designated recipients previously configured in the profile.

FAQs

- Q: Does RQConnect require any operator training?
A: Not really. An experienced tester will be configuring and using RQConnect within minutes of the plugin integrating into QTP. The RQConnect UI was designed to be intuitive and easy-to-use.
- Q: Will RQConnect require any configuration changes to my QTP instance?
A: No. RQConnect is self-installing and self-configuring.
- Q: Can I use my existing scripts with RQConnect?
A: Yes! Once your script is added to an RQConnect profile, that script can be tested across all browser/OS options available to your local system, network, or cloud provider.

By giving you the ability to run test scripts in multiple browser and O/S environments, and run scripts from the Cloud, RQConnect enables you to save time, thereby saving money, and delivering results at the speeds clients expect!
